



Install Alpha Vantage Excel Add-in

Requirements

The add-in requires .Net Framework 4.8 which should be standard on all recent Windows 10 builds. If for some reason your system does not have this runtime installed you can download it [here](#). To determine what runtimes are installed see [here](#).

The add-in should work with all versions of Excel 2013 or later for both 32-Bit and 64-Bit implementations of MS Office. You should be aware that the Microsoft Store version of Excel is not compatible with this Add-in. If you have an Office 365 Subscription you should be able to download a desktop installer.

The add-in will probably work on Office 2010 but since Microsoft no longer supports that version of Office we make no guarantees.

Not sure what version of Excel you have? (how to check [here](#)) Don't worry! We have you covered.

Alpha Vantage has put together a single installer program named `AlphaVantageExcelAddinInstaller.exe` that will check your system and install the correct version for you. After starting you'll see something like



Installer Status --- Version : 2.0.0

A 64 bit version of Excel seems to be installed on your system. Product: Office2016

The Alpha Vantage Market Data Excel Add-in is not installed on your system.

Add-in dynamic array support will be activated. If your instance of Excel is not current or if you prefer the old style arrays please click "Use Legacy Arrays" on the ribbon

Install 64 Bit Version of Add-in

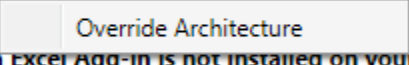
Quit (Don't Install)

for a 64-Bit Office installation with Office 2016. The highlighted sections may be different on your system. This page will try to show the version of Excel it detects.

We check many things to identify your version of Excel. Occasionally there are issues like multiple versions of Office installed on a machine or Office components from a different version of Office that were not properly uninstalled. There will be a very small number of instances where we just get it wrong.

If you're sure the detected version is wrong, you can set it manually by right clicking the Excel version line and selecting "Override Architecture."

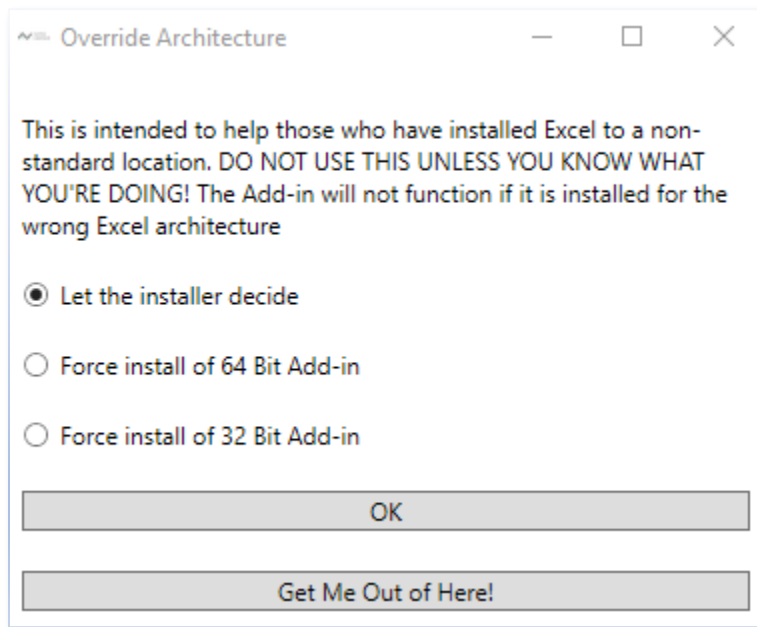
Installer Status --- Version : 2.0.0

A 64 bit version of Excel seems  Product: Office2016

The Alpha Vantage Market Data Excel Add-in is not installed on your system.

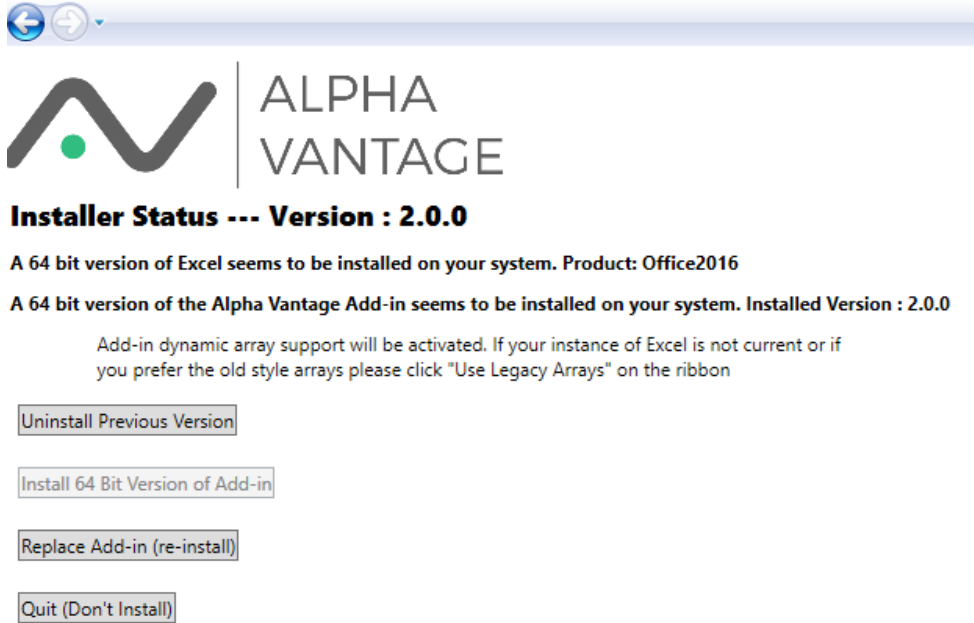
Add-in dynamic array support will be activated. If your instance of Excel is not current or if

This will bring up the dialog



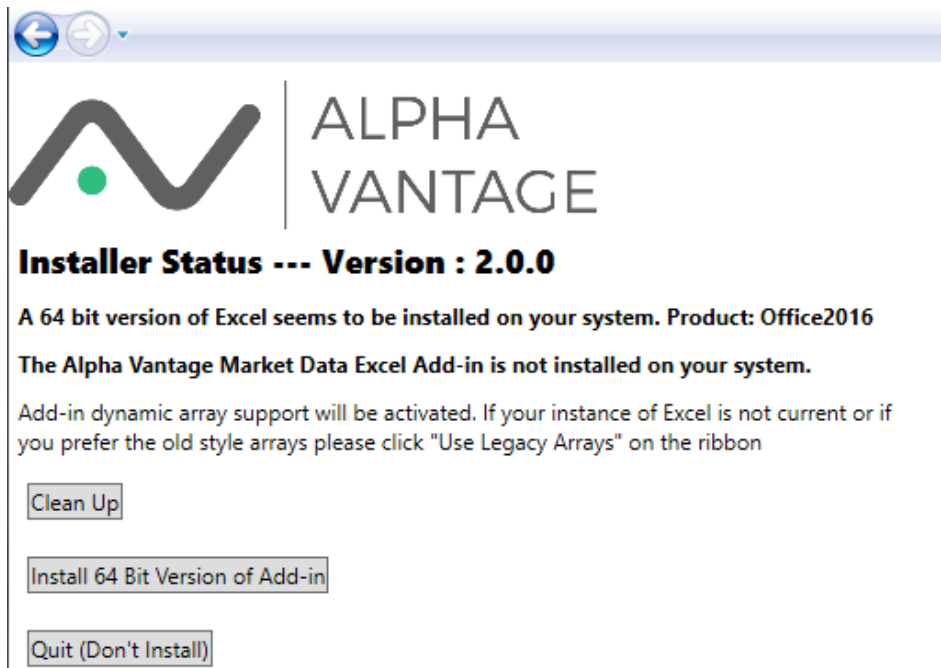
This dialog can also be used to force an install if the installer is not able to detect a valid version of Excel. This is not recommended unless you really know what you're doing.

If you have the Alpha Vantage Add-in already installed the initial page will look like (for a 64-Bit installation)



where you now have the option of uninstalling the currently installed Add-in or replacing it with the Add-in included with the installer. If you are upgrading from an earlier version the Replace button will show Upgrade instead.

If you uninstall the Add-in but don't specify "Cleanup" you'll see something like

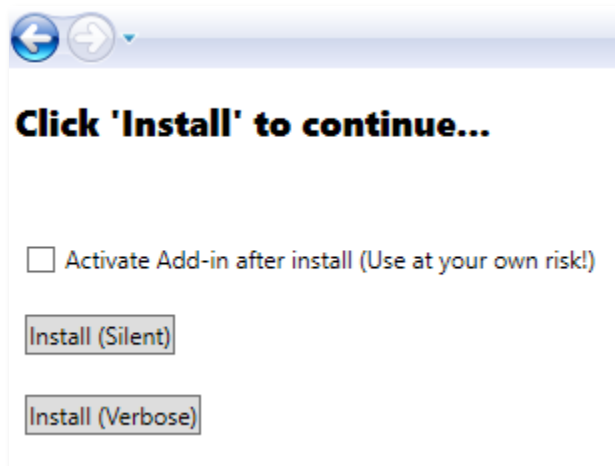


The "Clean Up" button exists to clean previous installations of the Add-in. Even when the Add-in is uninstalled there are registry entries and data left on your computer. This is so for example you can

update the software without re-entering your API key. If you wish to clean all traces of the Alpha Vantage Add-in from your system press this button.

Installing the Add-in

The installer will show the following screen when initiating the install process

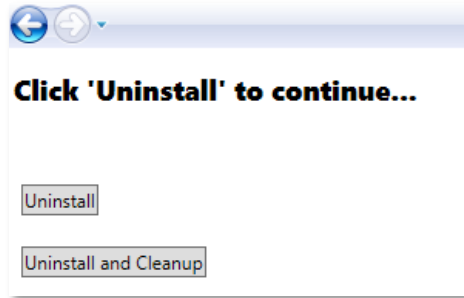


If this is an initial install you will see a checkbox asking if you wish to activate the Add-in after install. This exists because Excel does not automatically enable Add-ins by default (to enable manually [see](#)). If this box is checked the installer will attempt to update the user registry entries to tell Excel to activate this Add-in right away. This feature should work well with all standard desktop installations of Excel. However, since it modifies registry entries use at your own risk. If you are having trouble activating your Add-in don't use this feature. If the Add-in is being reinstalled over an older (or same) version the checkbox will not be visible.

The "Install (Silent)" attempts to install the Add-in with a minimum of user input. The "Install (Verbose)" button will enter a sequence of dialogs within the MSI installer.

Uninstalling the Add-in

The Uninstall screen for the installer has 2 options.

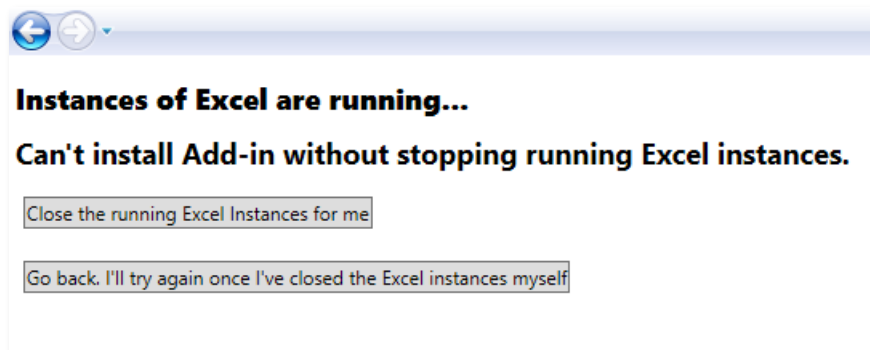


The simple “Uninstall” removes the software but leaves registry entries and data on your computer. Use this option if you intend to re-install the Add-in in the future.

The option “Uninstall and Cleanup” attempts to remove all traces of the Add-in from your computer. Be aware that if you use this option you will have to re-enter your API key if you re-install the Add-in.

A Note About Running Excel Instances

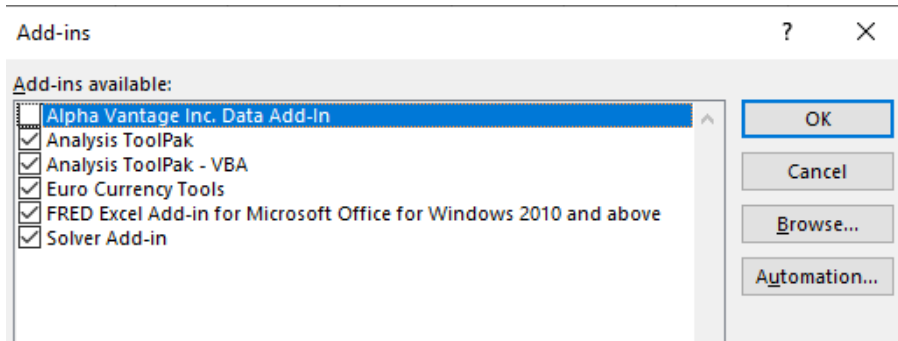
If you attempt certain operations while Excel is running, the Add-in may not be installed or uninstalled properly. In those cases, you will get a screen



The installer has the capability of closing any open instances of Excel. **SAVE ALL YOUR WORK BEFORE CLICKING TO CLOSE ALL EXCEL INSTANCES!** This is also necessary since Excel sometimes fails to completely shut down and you end up with “zombie” instances of Excel running in the background of your computer. No problem! We’ll take care of the “zombies” for you.

Enable the Add-in

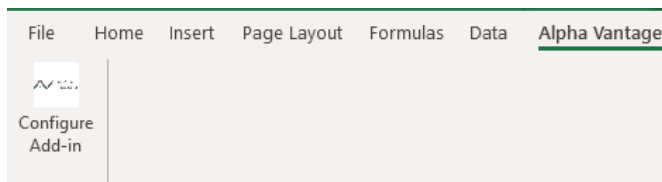
To enable the Add-in manually, open the Add-ins dialog box from within Excel. It should look something like



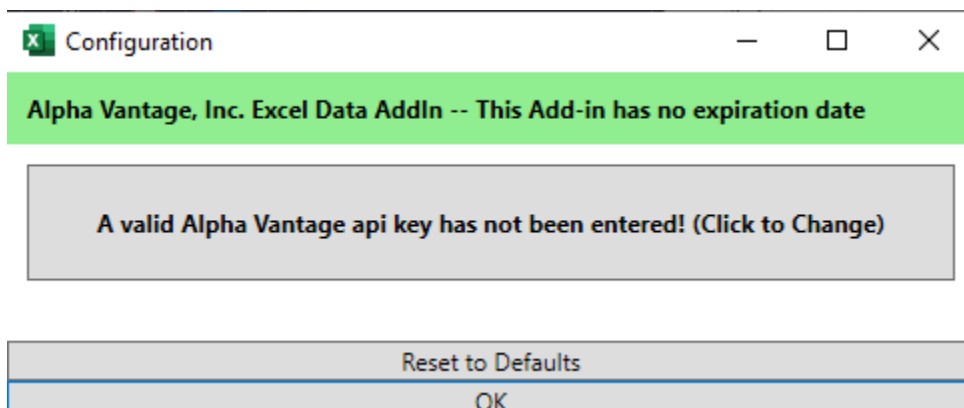
Click the “Alpha Vantage Inc. Data Add-in” and press OK.

Enter the API Key

If you have successfully enabled the add-in you should see an “Alpha Vantage” tab in Excel’s ribbon. Click the button named “Configure Add-in.” It should look something like

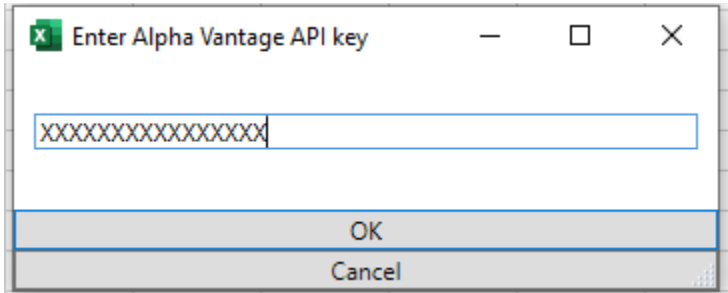


After clicking Configure you should see

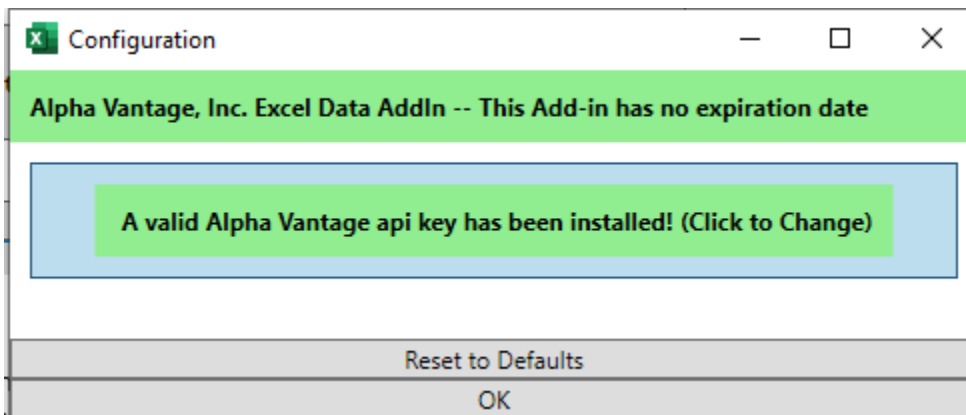


The message on top is the expiration date of the software if it has one. Official releases will not have an expiration date; however beta software *will* have an expiration date. To enter a key press on “A valid

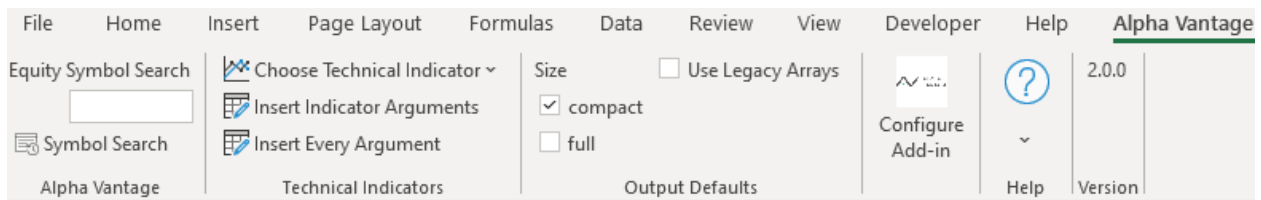
Alpha Vantage API key has not been entered!” It should bring up a dialog box where you can enter your key.



Press OK and you should be ready to go! The dialog should change to



where you will see a message on the Configuration dialog that “A valid Alpha Vantage API key has been installed!” After the key has been entered you should be able to see the full functionality of the Ribbon Tab



Your Add-in is now installed and fully functional!

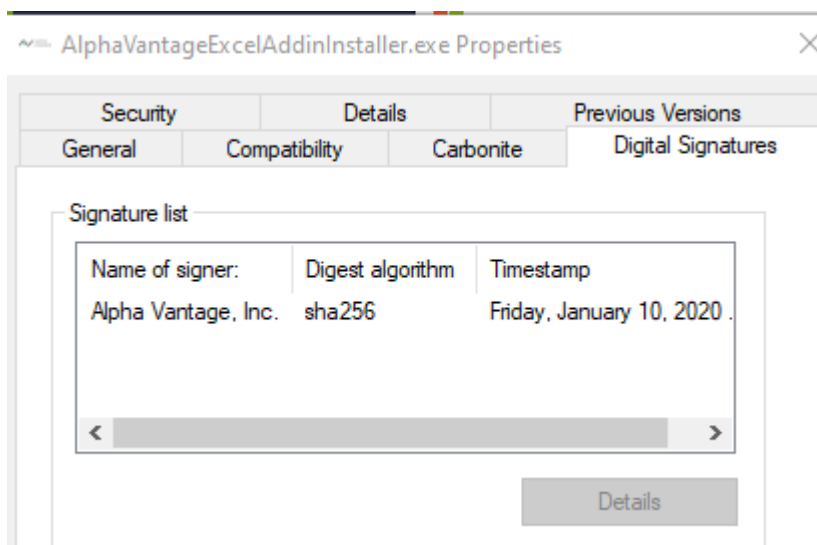
Additional documentation will be installed in the Documentation folder within the Examples folder. A shortcut should be installed on your desktop named “AlphaVantage Example Spreadsheets.” If for some reason the shortcut is not there the example folder can be found at

C:\Users\\AppData\Local\AlphaVantage\Examples

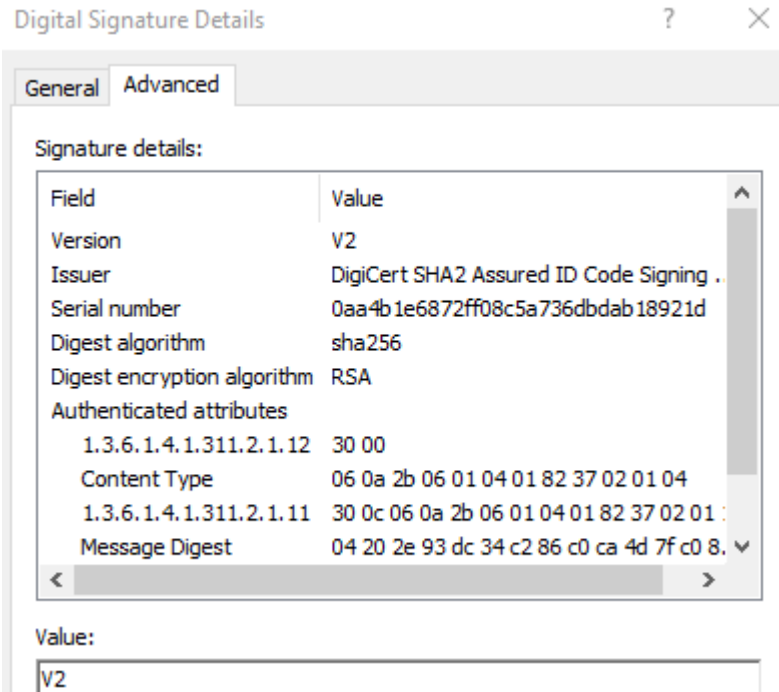
Installation Notes

Signing of the Installer and Add-in

To ensure that you have an official Alpha Vantage Installer and Add-in you can check the file signature. If you open the file properties, you should see a tab that says Digital Signatures



If you select Alpha Vantage, Inc. and click the Details button you will see further information about the signature.



Our files are digitally signed to protect you. We are registered with [DigiCert](#) to provide this service. If you are not sure your installer file is properly signed **do not use it!** If you are downloading your installer directly from us this should never be an issue.

Directories and Files Written to Your System

The files comprising the actual add-in and help files are installed to the standard user directory where Microsoft looks for user add-ins. This is

C:\Users\`<user name>`\AppData\Roaming\Microsoft\AddIns

On localized systems (not English) the directory name may not be Addins but whatever the equivalent is in your language.

Another directory

C:\Users\`<user name>`\AppData\Local\AlphaVantage

is also created to store configuration information, help files and logs.

Contact us at spreadheets@alphavantage.co with any problems or questions.